

# AGRICULTURE AND NATURAL RESOURCES NEWSLETTER

**Pike County Extension Office**  
**148 Trivette Drive Pikeville, Ky 41501**



## IN THIS ISSUE

- Introduction
- Calendar
- Event flyers
- Farmers market
- Appalachia Proud
- Fall Armyworms
- Managing pink eye in cattle
- Soil testing
- Kids corner



## A WORD FROM YOUR ANR AGENT

Although summer is winding down, there is still time to plant a fall garden! Early August is ideal for sowing cool season crops like lettuce, carrots, and turnips. Need help deciding what or when to plant? Ask us for a fall gardening calendar or planting guide! Fall is also the perfect time for soil sampling! The Extension Office offers free soil tests (while supplies last), along with pest and disease diagnostics.

Young nature lovers, join the Ag Explorers Club! This fun new club is a partnership between ANR and 4-H, offering opportunities to learn from Master Gardeners, explore beekeeping, connect with the farmers market, and discover the wonders of nature through hands-on activities.

Mark your calendars for our Ag Day & Fall Festival on Saturday, September 6th! Join us at the farmers market pavilion for a family fun-filled day of agriculture, food, and games. National Farmers Market Week is August 3rd-9th! Remember to visit the Pikeville Farmers Market, open Saturdays and Tuesdays! The Kentucky State Fair runs August 14-24th, so don't miss it! Be sure to check out our website and follow us on Facebook to stay updated on upcoming events!

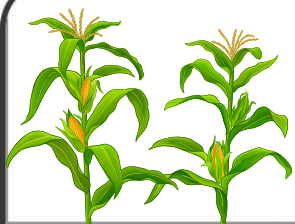


As always, let us know how we can help you grow!

**Emily Davis**  
**County Extension Agent**  
**Agriculture and Natural Resources**







# August



SUNDAY	MONDAY	TUESDAY	WEDNESDAY	THURSDAY	FRIDAY	SATURDAY
					1	2 <b>Farmers market</b> 9:00-1:00
3 <b>National Farmers Market week</b>	4 <b>Beekeepers meeting</b> 6:00 PM	5 <b>Farmers market</b> 4:30-7:00	6 Extension Garden Work Day 8-11am	7	8	9 Ag explorers club 8:30 AM Farmers market 9:00-1:00
10	11	12 App. Roots club meeting Farmers market 4:30-7:00	13 Extension Garden Work Day 8-11am	14 <b>Master Gard.</b> 5:30 PM <b>KY State Fair</b>	15	16 <b>Farmers market</b> 9:00-1:00
17	18	19 <b>Farmers market</b> 4:30-7:00	20 Extension Garden Work Day 8-11am	21	22	23 <b>Chefs showcase</b> Farmers market 9:00-1:00
24	25	26 <b>Farmers market</b> 4:30-7:00	27 Extension Garden Work Day 8-11am	28	29	30 <b>Farmers market</b> 9:00-1:00
31						

© BlankCalendarPages.com

Green=National Farmers Market week

Yellow=Kentucky State Fair



SPONSORED BY: PIKE COUNTY CONSERVATION DISTRICT, PIKE EXTENSION & PIKEVILLE FARMERS MARKET

# FALL FESTIVAL

## AG DAY EVENT

SEPTEMBER 6<sup>TH</sup> | 9AM TO 2PM

FARMERS MARKET PAVILION

- HONEY TASTING CONTEST
- BIGGEST PUMPKIN CONTEST
- CORN EATING CONTEST
- CHILI COOK OFF
- BAKE OFF
- GAMES FOR KIDS
- EDUCATIONAL BOOTHS & DEMONSTRATIONS

VENDORS SPACE AVAILABLE!

REGISTER FOR EVENTS THROUGH THE QR CODE



**FOR MORE  
INFORMATION CALL:  
606-432-4695 OR  
606-432-2534**





## Fall Festival AG Day Event

# VENDORS WELCOME!

(requires City License + \$25 booth fee)



**Register Here**



**For more information call 606-432-2534 or 606-432-4695**

Cooperative  
Extension Service

Agriculture and Natural Resources  
Family and Consumer Sciences  
4-H Youth Development  
Community and Economic Development

MARTIN-GATTON COLLEGE OF AGRICULTURE, FOOD AND ENVIRONMENT

Educational programs of Kentucky Cooperative Extension serve all people regardless of economic or social status and will not discriminate on the basis of race, color, ethnic origin, national origin, creed, religion, political belief, sex, sexual orientation, gender identity, gender expression, pregnancy, marital status, genetic information, age, veteran status, physical or mental disability or reprisal or retaliation for prior civil rights activity. Reasonable accommodation of disability may be available with prior notice. Program information may be available in languages other than English. University of Kentucky, Kentucky State University, U.S. Department of Agriculture, and Kentucky Counties, Cooperating.

Lexington, KY 40506



Disabilities  
accommodated  
with prior notification.





Cooperative  
Extension Service

Fall Festival AG Day Event

# Chili COOK OFF

SATURDAY,  
SEPTEMBER 6<sup>TH</sup>

Entries need to be brought to the  
Farmers Market Pavilion at 11am.  
Judging will begin at 1:00pm.

For more information please  
call the number below.

606-432-2534 OR 606-432-4695

Cooperative  
Extension Service

Agriculture and Natural Resources  
Family and Consumer Sciences  
4-H Youth Development  
Community and Economic Development

MARTIN-GATTON COLLEGE OF AGRICULTURE, FOOD AND ENVIRONMENT

Educational programs of Kentucky Cooperative Extension serve all people regardless of economic or social status and will not discriminate on the basis of race, color, ethnic origin, national origin, creed, religion, political belief, sex, sexual orientation, gender identity, gender expression, pregnancy, marital status, genetic information, age, veteran status, physical or mental disability or reprisal or retaliation for prior civil rights activity. Reasonable accommodation of disability may be available with prior notice. Program information may be available in languages other than English. University of Kentucky, Kentucky State University, U.S. Department of Agriculture, and Kentucky Counties, Cooperating.

Lexington, KY 40506



Disabilities  
accommodated  
with prior notification.



# Fall Festival Ag Day Event

 Cooperative  
Extension Service

Sponsored by Pike County  
Conservation District, Pike  
County Extension & Pikeville  
Farmers Market



# HONEY TASTING CONTEST

Think your honey is the sweetest in the region? Enter your best jar in our Honey Tasting Contest at the Pikeville Farmers Market! We're inviting local beekeepers and honey producers to showcase the unique flavors of their honey in this friendly competition.

**SATURDAY, SEPTEMBER 6<sup>TH</sup> 2025**

To register for  
events, use the QR  
code, find us on  
Facebook, or visit  
[pike.ca.uky.edu](http://pike.ca.uky.edu)



For more information call 606-432-2534 or visit [pike.ca.uky.edu](http://pike.ca.uky.edu)

**Cooperative  
Extension Service**

Agriculture and Natural Resources  
Family and Consumer Sciences  
4-H Youth Development  
Community and Economic Development

**MARTIN-GATTON COLLEGE OF AGRICULTURE, FOOD AND ENVIRONMENT**

Educational programs of Kentucky Cooperative Extension serve all people regardless of economic or social status and will not discriminate on the basis of race, color, ethnic origin, national origin, creed, religion, political belief, sex, sexual orientation, gender identity, gender expression, pregnancy, marital status, genetic information, age, veteran status, physical or mental disability or reprisal or retaliation for prior civil rights activity. Reasonable accommodation of disability may be available with prior notice. Program information may be available in languages other than English.  
University of Kentucky, Kentucky State University, U.S. Department of Agriculture, and Kentucky Counties, Cooperating.

Lexington, KY 40506



Disabilities  
accommodated  
with prior notification.





## FALL FESTIVAL AG DAY EVENT

# Bake Off

Ages 5-16 Cupcakes, Brownies, cookies  
17 & Up Cakes, Pies, Biscuits



Pikeville Farmers Market Pavilion  
Entries must be brought by 9AM  
Saturday, September 6th





To register for  
events, use the QR  
code, find us on  
Facebook, or visit  
[pike.ca.uky.edu](http://pike.ca.uky.edu)



# BIGGEST PUMPKIN CONTEST

## SATURDAY, SEPTEMBER 6<sup>TH</sup> 2025

For more information call 606-432-2534 or visit [pike.ca.uky.edu](http://pike.ca.uky.edu)

**Cooperative  
Extension Service**

Agriculture and Natural Resources  
Family and Consumer Sciences  
4-H Youth Development

**MARTIN-GATTON COLLEGE OF AGRICULTURE, FOOD AND ENVIRONMENT**

Educational programs of Kentucky Cooperative Extension serve all people regardless of economic or social status and will not discriminate on the basis of race, color, ethnic origin, national origin, creed, religion, political belief, sex, sexual orientation, gender identity, gender expression, pregnancy, marital status, genetic information, age, veteran status, physical or mental disability or reprisal or retaliation for prior civil rights activity. Reasonable accommodation of disability may be available with prior notice. Program information may be made available in languages other than English. University of Kentucky, Kentucky State University, U.S. Department of Agriculture, and Kentucky Counties, Cooperating.



Disabilities  
accommodated  
with prior notification.





# AG EXPLORERS CLUB

**Join ANR & 4-H for interactive lessons to grow & share a love for agriculture! Call the extension office at 606-432-2534 to sign up!**

## Meeting Dates & Times

**Aug 9 8:30-10:30 AM**

**Sep 16 5-6:30 PM**

**Oct 11 8 AM-12 PM**

**Nov 15 5-6:30 PM**



**Ages  
9-14**

**Master  
Gardeners**

*Learn from &  
grow with local  
master  
gardeners!*



**Bees**

*Learn from  
local  
beekeepers!*

**Farmers  
Market Fun**

*Meet local  
farmers & learn  
about our  
farmers market!*

**Hiking**

*Explore a  
trail & all it  
has to offer!*



# EAT LOCAL

## Pikeville Farmers Market

Tuesdays 4:30-7:00

Saturdays 9:00-1:00



APPALACHIAN ROOTS GARDEN CLUB

## Flower Power: ESTABLISHING POLLINATOR HABITATS

TUESDAY, AUGUST 12<sup>TH</sup>, 2025

Pikeville Farmers Market Pavilion  
130 Adams Lane  
5:30 pm

Join us at the Pikeville Farmer's Market pavilion for a special guest speaker, Dr. Tamara Horn Potter, author and apiarist, presenting her book "Flower Power: Establishing Pollinator Habitat". Free pollinator seeds will be provided by Pike County Extension ANR.



# What is Appalachia Proud?



First introduced by Kentucky Proud in 2014, the Appalachia Proud brand celebrates the innovation and entrepreneurial spirit of Kentucky's Appalachian farmers while honoring the region's rich agricultural traditions.

Appalachia may be famous for its hills, hollers, but there's more to discover.

Historically, the unique landscape of this region required different approaches. The mountainous terrain that makes up much of the Appalachian region in Kentucky has traditionally facilitated smaller scale production with a focus on a large variety of crops and animals.

In 2019, the Kentucky Department of Agriculture added 17 eligible counties to use the Appalachia Proud logo on labels and promotional materials and in 2020 unveiled a redesigned logo that we think perfectly captures the agricultural heritage of Appalachia Kentucky.

Mountains of Potential.

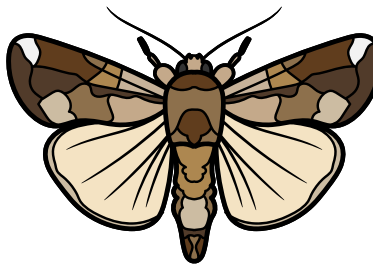




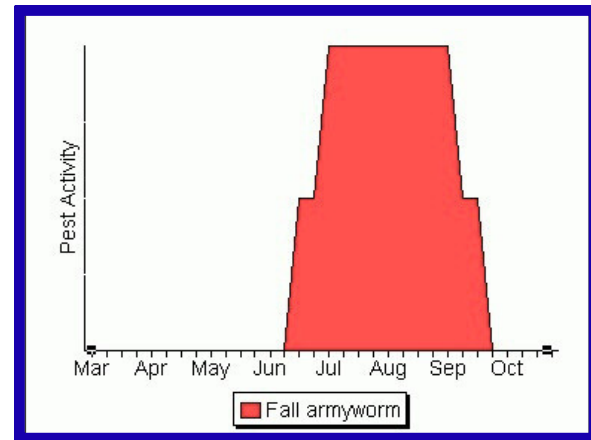
## Fall Armyworm

### Description

Larvae vary from light tan to nearly black with three thin light yellow lines down the back. There is a wider dark stripe and a wavy yellow red splotched stripe on each side. They resemble both armyworms and corn earworms but fall armyworms have a prominent white inverted Y mark on the front of the head. The spherical gray eggs are laid in clusters of about 150, usually on the leaves of host plants. Egg masses are covered with a coating of moth scales or fine bristles.



### Pest Activity



### Damage

Larvae feed on the leaves leaving "window pane" type damage and later burrow deep into the whorl. The tassel, leaves on the upper portion of the plant, and the ear may be partly or totally destroyed. The damage to the ear of corn may be far more important than the leaf damage. This insect can be a problem in the south following a cold, wet spring. FAW migrate north since they cannot overwinter in the northern states. Other hosts include sorghum and other grasses.



### IPM Techniques and Scouting Procedures

A few days before tasseling and silking, check closely for infestations. Look for large larvae in the whorls which will be pushed out by the emerging tassels. These larvae may then attack the very small ears. Egg masses and small larvae may be found on the leaves and behind leaf sheaths. Determine if an infestation of large larvae or small larvae will be present to attack the very small, developing ears. Continue to check closely for this insect until silks begin to dry.





# Managing your herd's pinkeye long before the first 'bad eye' of the season

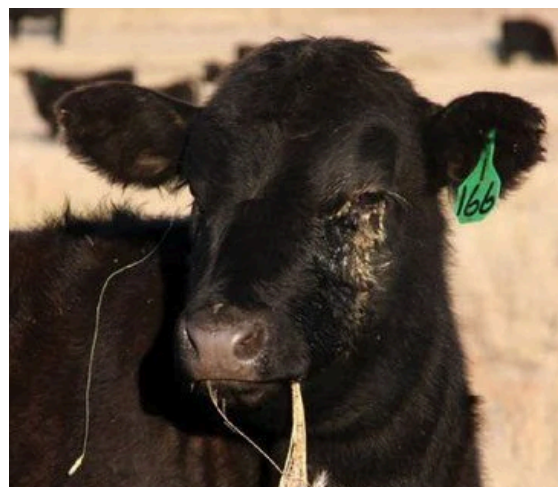
Pinkeye, or Infectious Bovine Keratoconjunctivitis (IBK), is one of the most frustrating and costly diseases beef producers face. It negatively affects weaning weights, increases treatment costs and leads to discounts at sale due to corneal scarring. While it spreads quickly once it starts, the key to managing pinkeye lies in reducing risk—long before the first bad eye of the season.

## Understanding the Disease

Pinkeye is caused by a complex mix of bacteria, most notably ***Moraxella bovis***, ***Moraxella bovoculi***, and ***Mycoplasma bovoculi***. These organisms can live harmlessly in the eye until certain conditions—like eye injury or irritation—trigger them to become aggressive. ***M. bovis***, for example, uses hairlike pili to attach to damaged corneas and releases toxins that destroy corneal tissue — leading to painful ulcers. New research shows that pinkeye involves more than just one bacterium, making vaccine development difficult. Some strains are considered harmless, while others are highly virulent and resistant to antibiotics.

## Reducing Risk Starts Early

Reducing the risk of pinkeye begins with strengthening your herd's natural defenses. Good nutrition, especially adequate levels of trace minerals like selenium and copper, is essential. Clean, cool water helps maintain hydration and tear production, which protects the eye. Avoid stagnant water sources and regularly clean automatic waterers. Environmental irritants are major contributors. Dust, ultraviolet (UV) rays, tall weeds and seed heads can all damage the eye, making it possible for bacteria to take hold. White-faced breeds like Herefords are more susceptible due to increased UV reflection to the eye's surface. Providing shade and mowing pastures can help reduce these risks.





# Managing your herd's pinkeye long before the first 'bad eye' of the season

## Face Fly Control

Face flies are the primary transmitters of pinkeye bacteria. They feed on eye secretions and can spread infection from animal to animal. Unlike horn flies, face flies aren't affected by systemic insecticides. Instead, use a combination of feed-through insect growth regulators (IGRs), insecticide ear tags, dust bags and back rubbers strategically placed in high-traffic areas. Start IGRs in mid-spring, about 30 days before fly season, and continue until 30 days after it ends. Rotate insecticide products annually, based on mode of action (MOA), to prevent resistance. Aim to keep face fly numbers below 10 per head.

## Recognizing Symptoms and Acting Fast

Early signs of pinkeye may include excessive tearing, squinting and blinking. Prompt treatment is critical to prevent spread and minimize damage. Long-acting injectable antibiotics like oxytetracycline (LA-300®) or tulathromycin (Draxxin®) are effective and labeled for pinkeye treatment. In severe cases, eye patches or surgical procedures may be needed to protect the cornea. Topical fly repellents and isolating affected animals can also help reduce transmission. Always consult your veterinarian for treatment decisions and prescriptions.



## The Role of Vaccines

Vaccines can reduce the number and severity of cases but aren't foolproof. Commercial vaccines work best when the strain in the vaccine matches the strain in your herd. When they don't, custom-made (autogenous) vaccines may be more effective. Timing is key—start vaccinations 4–6 weeks before pinkeye season and follow up with a booster for full protection. Pinkeye is a complex disease, but control is possible with a proactive approach. Focus on nutrition, clean water, fly control and minimizing eye irritants. Work closely with your veterinarian to develop a treatment and vaccination plan tailored to your herd. With early action and consistent management, you can reduce the impact of pinkeye and keep your cattle healthy and productive.



# Soil testing

Did you know...

**The Pike County extension office can do up to five FREE soil tests for you! (while supplies lasts)**

A soil probe, auger, spade, or knife are all tools that can be used to take the individual cores that will make up the "field" sample. You will also need a clean, dry, plastic bucket to collect and mix the sample cores. Be sure not to use galvanized or rubber buckets because they will contaminate the sample.

Soil samples can be collected through much of the year, although fall (September to December) or spring (February to April) are the best times. Fall sampling will often result in a faster return of results and recommendations. Fall sampling will also allow the grower time to have the fertilizer applied well before planting the next crop.

Take the soil cores randomly throughout the sampling area.

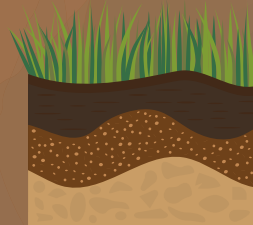
Do not sample:

- back furrows or dead furrows
- old fencerows,
- areas used for manure or hay storage and livestock feeding
- areas where lime has been piled in the past

After all cores for an individual sample are collected and placed in the bucket, crush the soil material and mix the sample thoroughly. Allow the sample to air dry in an open space free from contamination. Do not dry the sample in an oven or at an abnormally high temperature. When dry, fill the sample container with the soil

Soil sample bags and information forms for submitting samples are available at the Pike county Extension office!

Call our office for more information:  
(606)-432-2534





# Kids Corner

